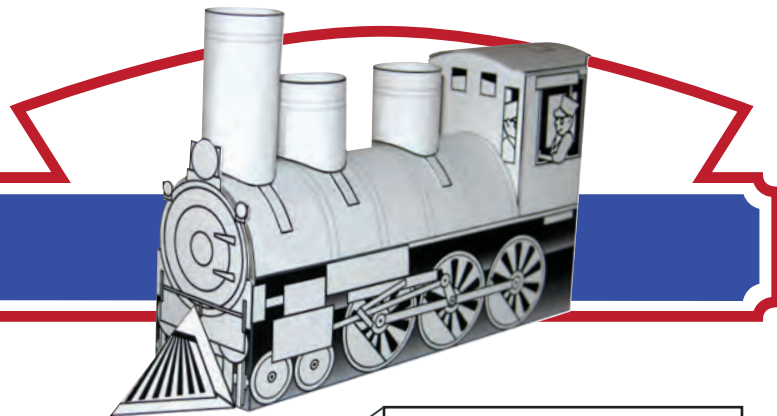


Build Your Own

TWEETSIE[®]

RAILROAD

Refer to Assembly Instructions Sheet



3-D Make Your Own

Parts & Pieces Sheet 9A

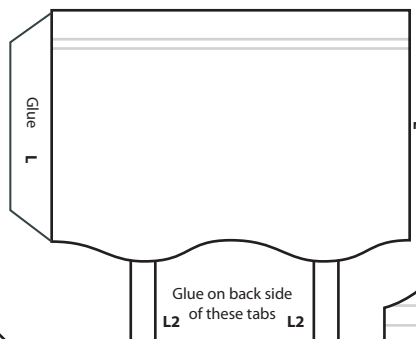
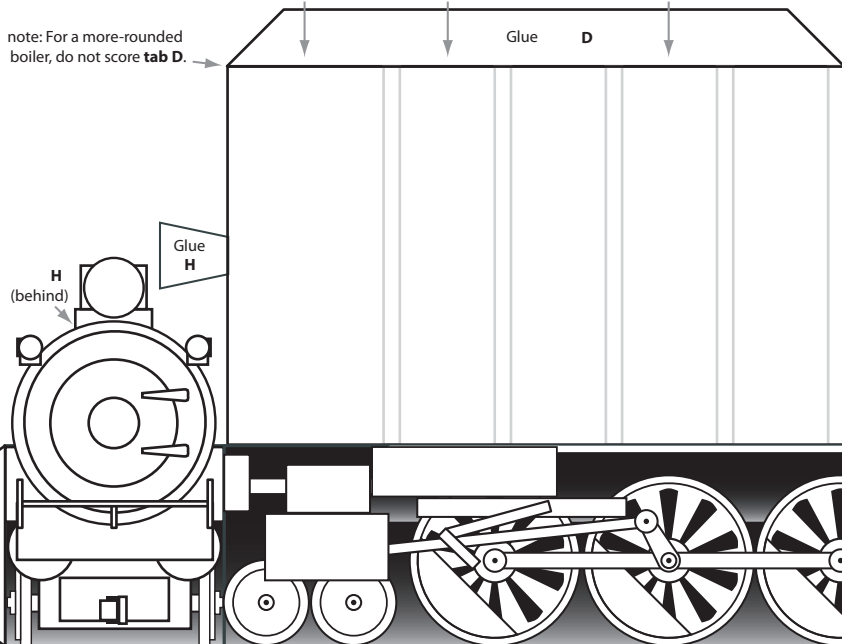
TWEETSIE[®]
RAILROAD

Design & Color Your Own Locomotive #12 Our fans have always been a creative bunch. You asked for it - now you can paint Tweetsie's #12 the way you want! Go wild, go traditional, have fun! **This locomotive was designed by:**

Fast Facts Stand-Up Plaque

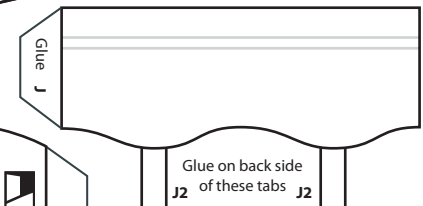
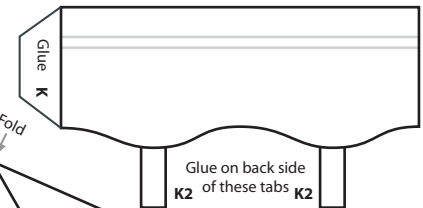
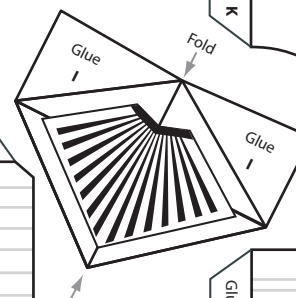
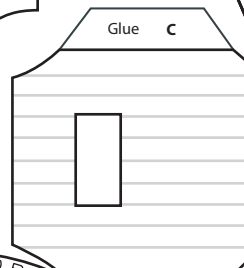
note: For a more-rounded boiler, do not score **tab D**.

L2 center on top (refer to photo)
J2 center on top (refer to photo)
K2 center on top (refer to photo)



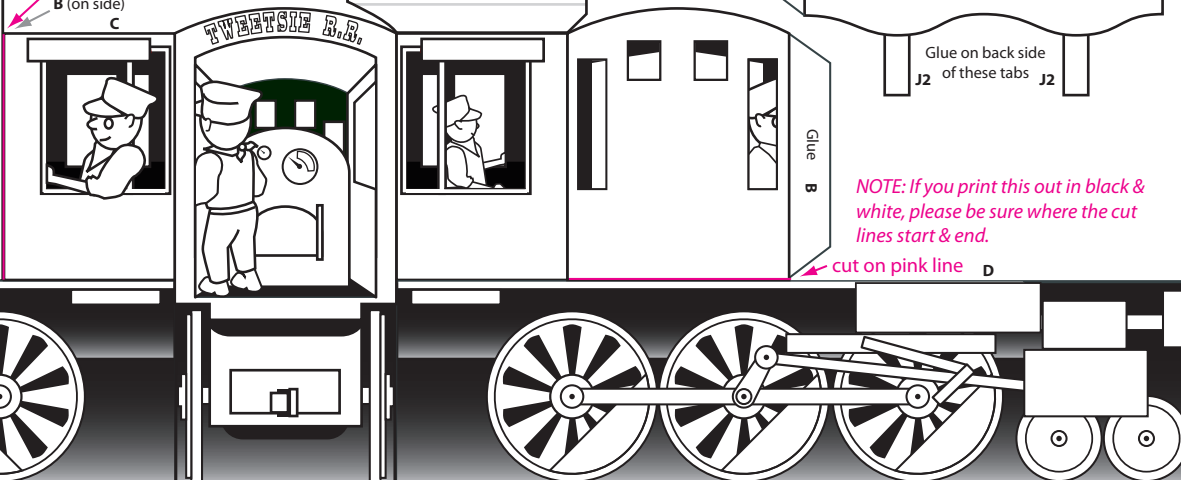
NOTE: If you print this out in black & white, please be sure where the cut lines start & end.

cut on pink line
B (on side)

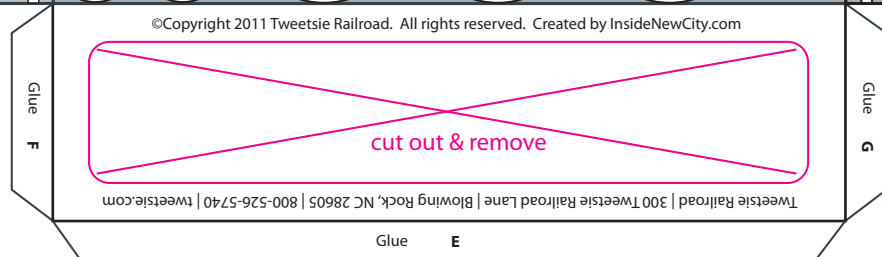


NOTE: If you print this out in black & white, please be sure where the cut lines start & end.

cut on pink line D



I centered on front, flush to the bottom (refer to photo)



©Copyright 2011 Tweetsie Railroad. All rights reserved. Created by InsideNewCity.com

Tweetsie Railroad | 300 Tweetsie Railroad Lane | Blowing Rock, NC 28605 | 800-526-5740 | tweetsie.com



TWEETSIE.COM Visit our website to find out more about Tweetsie Railroad, and how to plan your next visit to our theme park for **YOUR** Wild West Train Adventure!

©Copyright 2011 Tweetsie Railroad. All rights reserved.
Tweetsie Railroad | 300 Tweetsie Railroad Lane
Blowing Rock, NC 28605 | 800-526-5740 | tweetsie.com