

Build Your Own

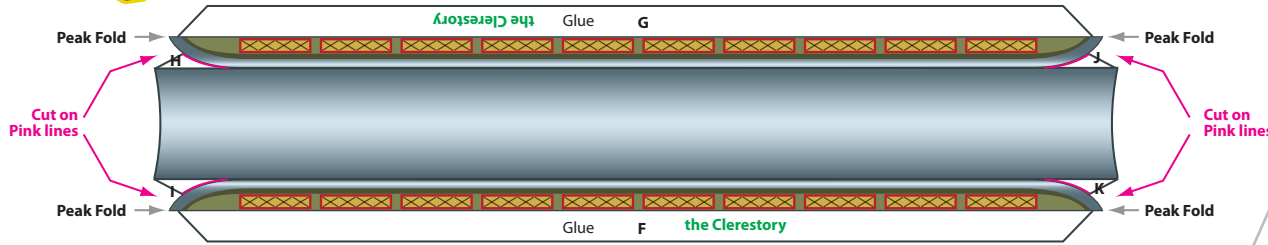
# TWEETSIE<sup>®</sup>

RAILROAD

Refer to Assembly Instructions Sheet

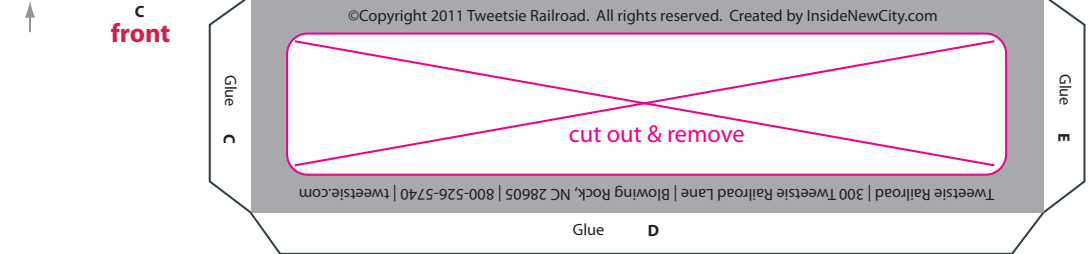
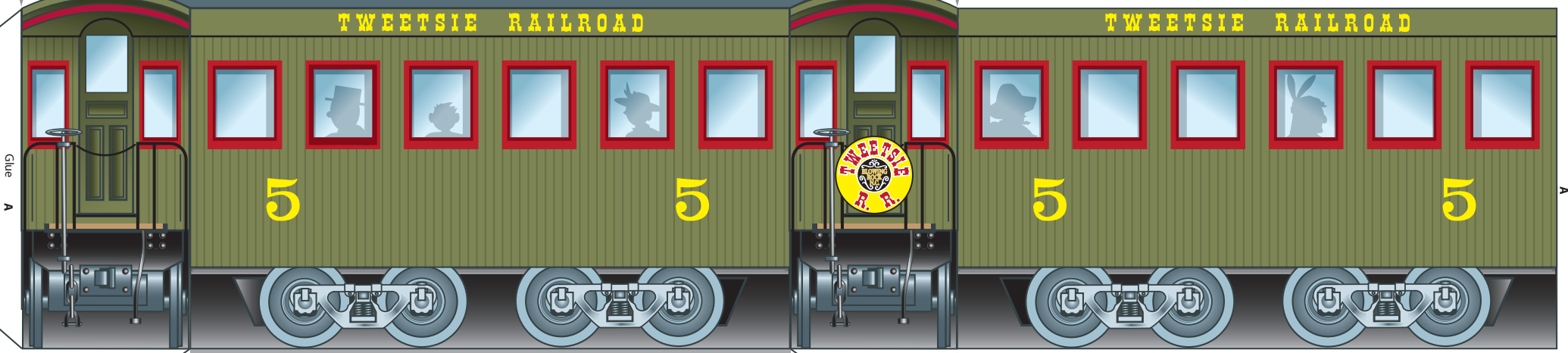
## 3-D Historic Coach #5

## Parts & Pieces Sheet 12A



**Tweetsie's Historic Coach Car #5** is a rare piece of original narrow-gauge rolling stock, dating from the 1870's. It was in regular service at Tweetsie Railroad from the park's opening in 1957 until the late 1990's, and is now used primarily for special events.

Tweetsie Historic Coach Fast Facts Stand-up Plaque



**TWEETSIE.COM** Visit our website to find out more about Tweetsie Railroad, and how to plan your next visit to our theme park for **YOUR** Wild West Train Adventure!

©Copyright 2011 Tweetsie Railroad. All rights reserved.  
Tweetsie Railroad | 300 Tweetsie Railroad Lane  
Blowing Rock, NC 28605 | 800-526-5740 | tweetsie.com